



We will help you achieve your goals

Blossom Community Care



**Fostering independence,
happiness, and creating
opportunity for people
with disability.**



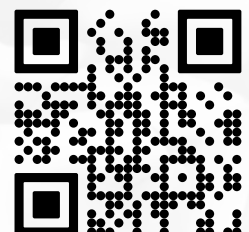
Registered NDIS Provider

NDIS Provider Number – 4050031422

Table of content

- ▶ **Understanding the NDIS**
What is the NDIS?
- ▶ **Applying for the NDIS**
Where to start?
- ▶ **How does the NDIS work?**
Supports and services funded by the NDIS
- ▶ **Blossom Community Care**
Values
- ▶ **How we can help you**
Services
- ▶ **Our stories**
Testimonials
- ▶ **Join us on an adventure**
Contact & Career
- ▶ **How to sign-up?**
Scan QR Code

 **(03) 8007 2000**
www.blossomcommunitycare.com.au





Understanding the NDIS

What is the NDIS?

The NDIS is Australia's first national scheme for people with disability. It moves away from the previous system of providing block funding to agencies and community organisations, to give funding directly to people with a disability.

What does the NDIS do?

Provide funding to eligible people based on their individual needs. The NDIS provides reasonable and necessary funding to people with a permanent and significant disability to access the supports and services they need to live and enjoy their life.

How do I find my local ECEI Coordinator or LAC?

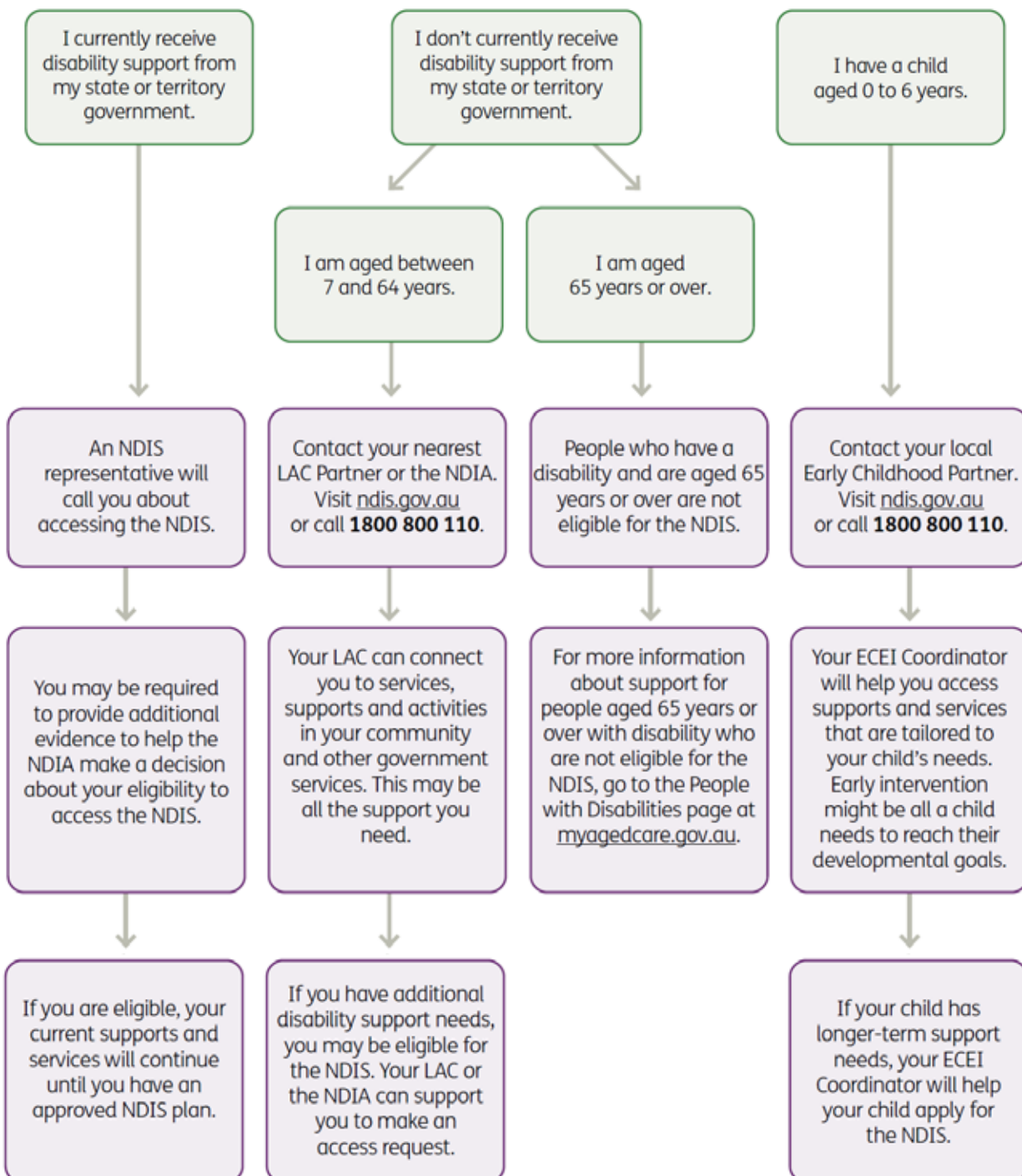
Visit [ndis.gov.au](https://www.ndis.gov.au) to search for offices in your area, or call **1800 800 110**.

To be eligible you must:

- be younger than 65 years old at the time you apply.
-
- be an Australian citizen, or
- be a permanent resident, or
- hold a Protected Special Category visa.
-
- you need to have a permanent and significant disability that stops you from doing everyday things by yourself.

Applying for the NDIS

Where to start?



How does the NDIS work?

Supports and services funded by the NDIS

What supports and services can the NDIS fund?

The NDIS funds a range of supports and services, which may include education, employment, social participation, independence, living arrangements, and health and wellbeing.

A reasonable and necessary support or service:

- must be related to your permanent disability
- must not include day-to-day living costs unrelated to your disability support needs, such as groceries
- should represent value for money

- must be likely to be effective and work for you
- should take into account support given to you by other government services, your family, carers, networks and the community.

Is the NDIS linked to the Disability Support Pension?

No. The Disability Support Pension (DSP) is separate to the NDIS. If you are receiving the DSP, this does not mean you are automatically eligible for the NDIS. You will still need to check your eligibility and apply for the NDIS.

Similarly, if you receive NDIS funding, it will not impact any income support you receive, such as the DSP or Carer Allowance.

I am receiving compensation payments. Will this affect my access to the NDIS?

No. Compensation for a personal injury will not affect your eligibility to access the NDIS.



Community, connection, and creativity is at the heart of everything we do

Blossom Community Care is Melbourne's leading registered NDIS provider, offering a wide range of disability services to help people achieve independence, happiness, and opportunities.

Our team includes passionate and diverse support workers who can communicate with participants in a variety of languages, ensuring that everyone receives the support they need to reach their goals.

At BCC, we understand that navigating the NDIS can be complex and overwhelming. That's why we're here to help. Our team of experts are dedicated to providing you with the guidance and support you need to make the most of your NDIS plan. Whether you're just starting out or you're looking to review your current plan, we can help you every step of the way. So why wait? Get started today and let us help you achieve your goals!



Values

- ▶ Community
- ▶ Connection
- ▶ Creativity

How can we help you?



- ▶ Guide you through the NDIS process
- ▶ Prepare you for your planning meeting
- ▶ Help you implement and manage your NDIS plan
- ▶ Provide a clear and easy-to-understand explanation of the NDIS and quality service.
- ▶ And much more...

Explore services we offer

Capacity Building

Supports

- ▶ **Allied Health Services**
Occupational Therapist, Speech Therapist, Allied Health Assistance, Physiotherapist and more
- ▶ **Specialist Support Coordination** -Level 3
- ▶ **Support Coordination** -Level 2
- ▶ **Skills Development and Training**
- ▶ **Increased social and community participation**
- ▶ **Psychosocial Recovery Coach**
- ▶ **Plan Management**
- ▶ **Therapeutic Support**

Core

Supports

- ▶ **Group Activities**
- ▶ **Farm Stay**
- ▶ **Implem. of Behaviour Support Plan**
- ▶ **Assisted Travel/ Transport**
- ▶ **Early Childhood Supports**
- ▶ **Community & Centre Based Activities**
Art Therapy group classes, Music Classes, Scrap-booking, Day trips, Cooking class, Computer Class, self-defence classes & fitness classes
- ▶ **Assistance with daily life (Daily Activities)**
- ▶ **Assistance with Social & Community Participation**
- ▶ **Implementation of Behaviour Supports** (Module 2a)



NDIS Accommodation

Supports

- ▶ **Supported Independent Living** (SIL)
- ▶ **Short Term Accommodation** (STA)
- ▶ **Medium Term Accommodation** (MTA)
 - ▶ Brighton
 - ▶ Hoppers Crossing
 - ▶ Werribee
 - ▶ Williams Landing
 - ▶ Wyndham Vale
 - ▶ Springvale
 - ▶ Tarneit
 - ▶ Dandenong
 - ▶ Noble Park

As one of the leading disability service providers in Australia, BCC offers a wide range of services designed to support people with disability to live their lives to the fullest. From core services to community and activity programs, to accommodation services like Supported Independent Living (SIL), Specialist Disability Accommodation (SDA), Short Term Accommodation (STA), and more, BCC is committed to providing flexible and innovative solutions that meet the unique needs and goals of our clients.

- ▶ **Specialist Disability Accommodation** (SDA)
 - ▶ Wyndham Vale
 - ▶ Officer
 - ▶ Tarneit

At the core of our services are our highly trained and experienced support workers, who provide tailored support to meet the individual needs of each of our clients.

Whether it's assistance with daily living tasks like meal preparation, personal care, and transportation, or support to participate in community activities, our team is dedicated to empowering our clients to live as independently as possible.

In addition to our core services, we also offer a range of community and activity programs that provide opportunities for social connection, skill-building, and personal growth. From art classes and music therapy to sports and recreation programs, our community services are designed to help our clients to build relationships, develop new interests, and explore their creativity.

Read Our Stories

A team of skilled care providers



We come from all walks of life and different cultures, languages, and abilities enabling us to support and connect with participants and their families no matter their background. It brings me great joy to lead such a compassionate team who have unwavering support for our participants and their families.

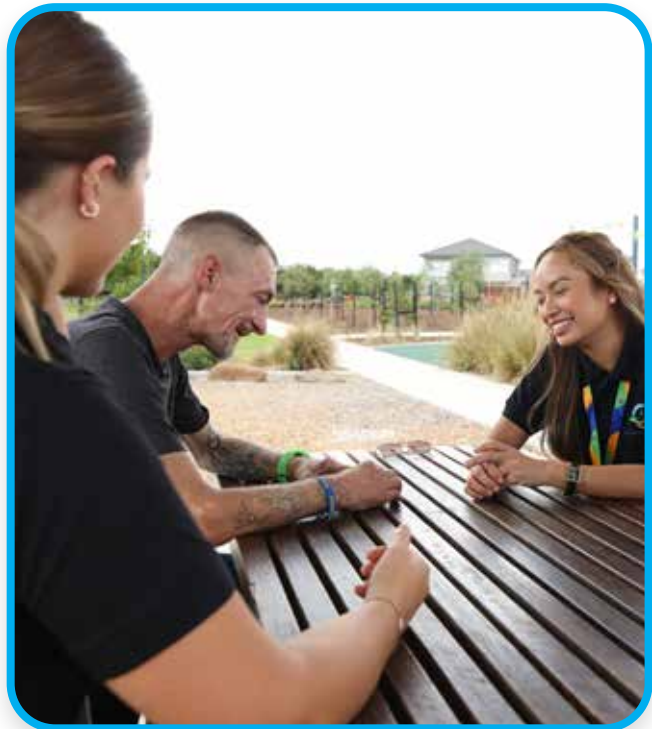
Mak Laddha - CEO Blossom Community Care

We believe that every person has a story to tell, and we're proud to share the stories of the many clients we have supported over the years. Through our "Hear Our Stories" campaign, we showcase the diverse experiences and unique journeys of the people we serve, providing a powerful testament to the impact of our services.

At BCC, we pride ourselves on the high caliber of our team members. We believe that the key to providing exceptional care and support is to recruit and train staff who are not only skilled and experienced, but also compassionate and dedicated to the needs of our clients.

Our team members are proficient in languages such as:

- ▶ Hindi
- ▶ Spanish
- ▶ Maori
- ▶ Somali
- ▶ Burmese
- ▶ Dari
- ▶ English
- ▶ Chinese
- ▶ Gujarati
- ▶ Arabic
- ▶ Urdu
- ▶ Punjabi
- ▶ Cantonese
- ▶ Mandarin



Some of the key factors that we consider when selecting our team members include:

- ▶ Experience and qualifications: We Prioritize candidates who have relevant qualifications and experience in disability support and care, as well as those who have demonstrated a commitment to ongoing professional development.
- ▶ Personal qualities: We look for team members who are compassionate, empathetic, and patient, and who are committed to treating our clients with dignity and respect.



Get in touch with us

Contact Information



📍 Activity Hub

Derrimut

13/45 Hunter Road,
Derrimut, VIC 3026



📍 Truganina

Office Servicing West & Northern suburbs

Unit 31, 20 Prosperity Street
Truganina, VIC , 3029



📍 Springvale

Office Servicing East & South-Eastern suburbs

7/27-31 Springvale Road,
Springvale, VIC , 3171

General Inquiries

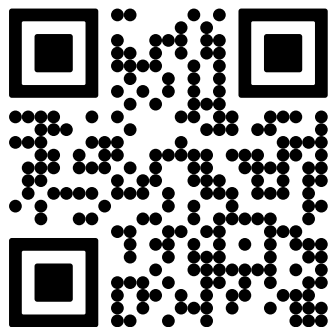
info@blossomcommunitycare.com.au

☎ (03) 8007 2000

Sign up now

Scan the QR Code, provide the required information and get started!

☎ (03) 8007 2000





Blossom Community Care



Registered NDIS Provider

NDIS Provider Number – 4050031422



Learn more about
Blossom Community Care

